

INSTALLATION INSTRUCTIONS

FALL STOP

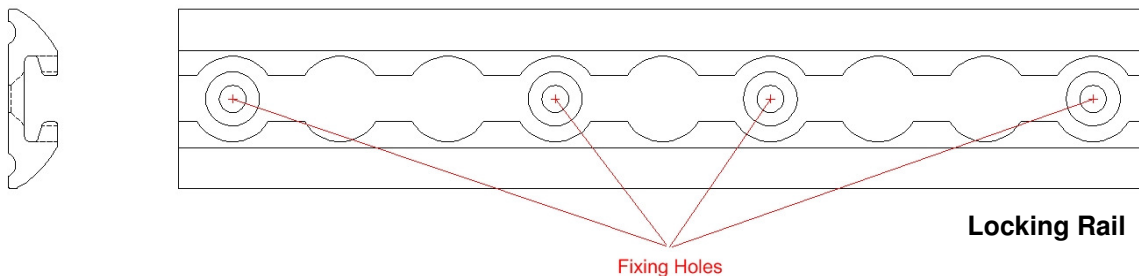
These instructions cover the fitting of the FALL STOP tail lift barrier.



Fitting

The locking rail is the only component that needs to be fitted to the tail lift. The barrier frame simply clips in and out of the locking rail without any tools being required:

- Lay the locking rail centrally across the rear of the lift, as far back as is practically possible, ensuring that it lays flat and square to the lift platform. Ensure there are no obstructions under the lift platform where holes need to be drilled and that the locking rail will not foul any moving part of the lift
- Using the centre of the fixing holes in the locking rail as guides, mark the lift platform for drilling



- Remove the rail and drill through the lift platform at the four marked places, using a drill diameter of between 6.5mm and 7mm
- Deburr around the holes on top and underneath the lift platform
- Offer the rail back and align with the drilled holes. Secure in place using the supplied fixings, inserting the screw through the top and fixing underneath with the washer and nyloc nut, ensuring the washer is against the underside of the lift platform